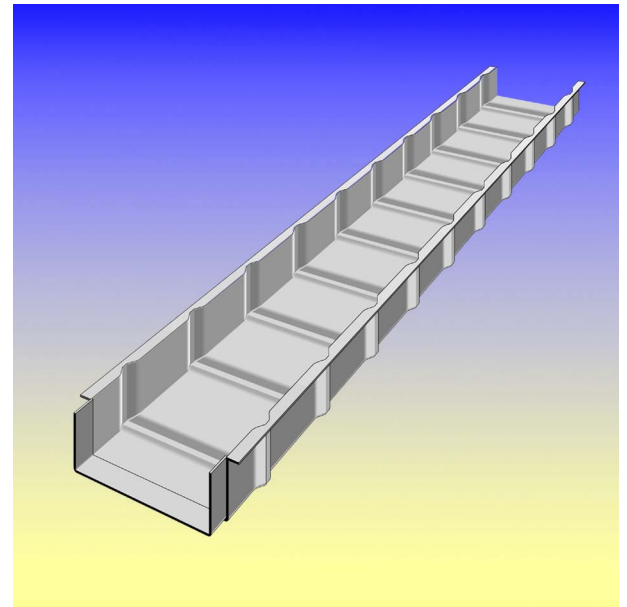


## Description / Applications

Range of ground ducts in glass reinforced polyester **BK series**

- Exterior and interior sizes are quite the same
- Quick and easy loading and unloading
- Light material : BK ground ducts do not require any big machines to be installed
- Stiff and self-supported
- Cover fitted into base, fastened with clips or hinges (in option)
- Extremely impact & frost-resistant



### Standard resin composition

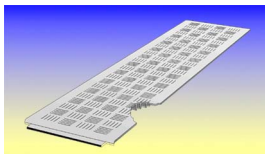
Technical characteristics on request  
R6204

### Standard Colour

RAL 7032 type

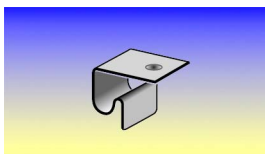
Ref. BK 200140 : 250 x 140 mm  
BK 300176 : 350 x 176 mm  
BK 400176 : 450 x 176 mm

## Accessories / Components



Cover in polyester

width 250	BK DR200
width 350	BK DR300
width 450	BK DR400



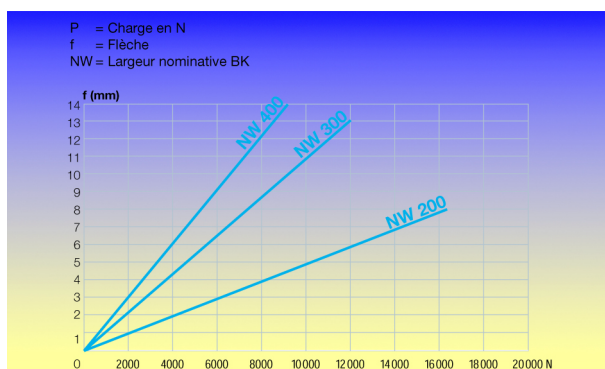
Clip For fixed cover mounting

DF 94/4

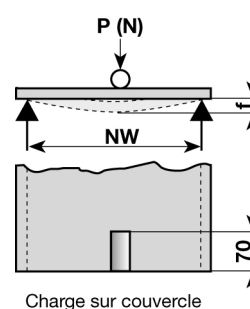
Set of clips and hinge for articulated cover mounting

DF 94/C

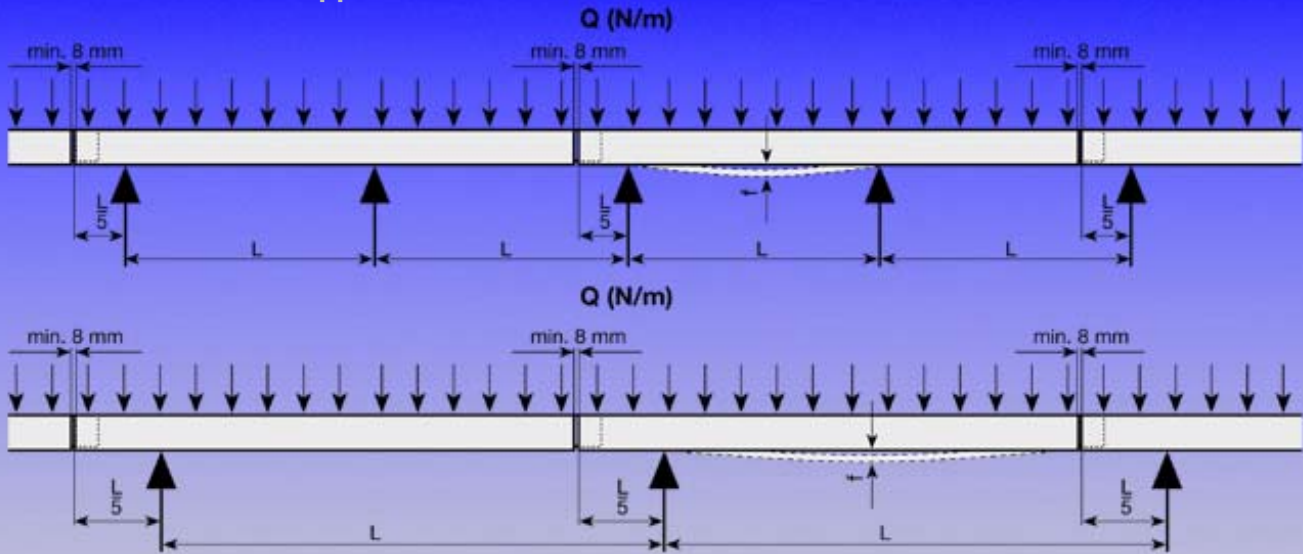
## Major characteristics



### Load behaviour Of cover BK DR

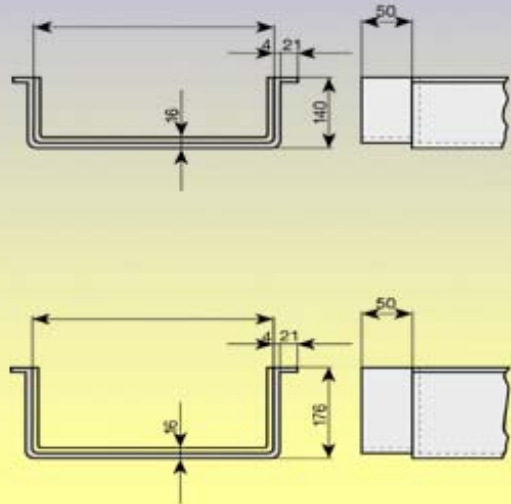
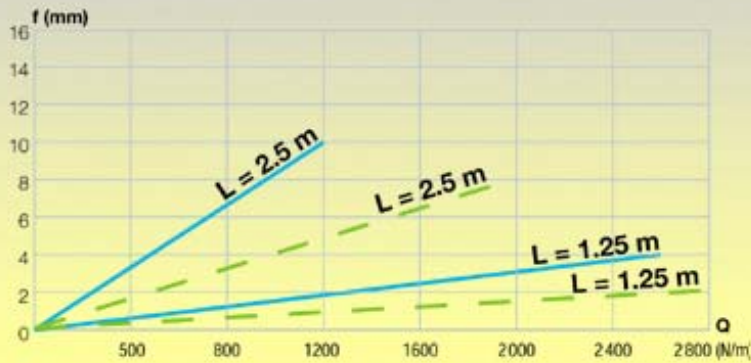


## Behaviour when self-supported



f = Deflection  
L = Support distance  
Q = Uniformly distributed load

— BK 140 mm  
— BK 176 mm



## Weight

### Base

Thickness 4 mm

BK 200140	3.5 kg/m
BK 300176	4.7 kg/m
BK 400176	5.4 kg/m

### Cover

Thickness 4.5 mm

BK DR200	4.1 kg/m
BK DR300	5.9 kg/m
BK DR400	7.6 kg/m